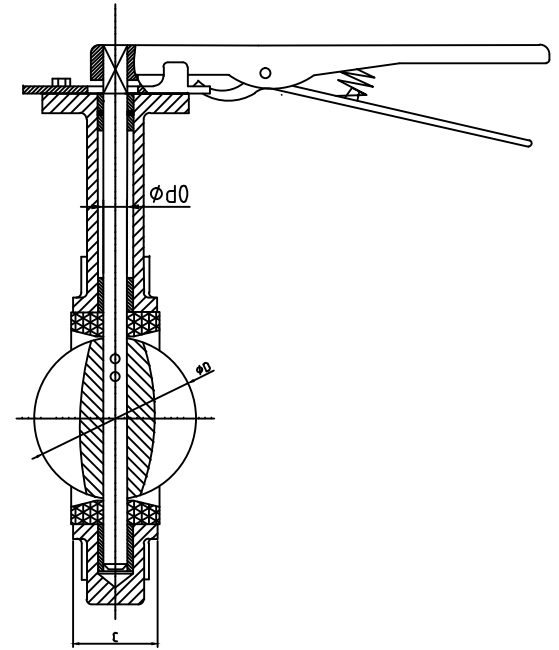
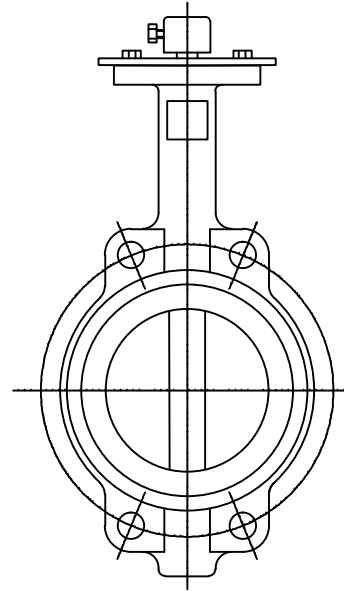
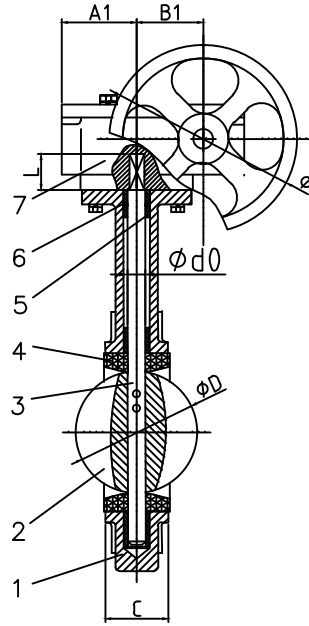
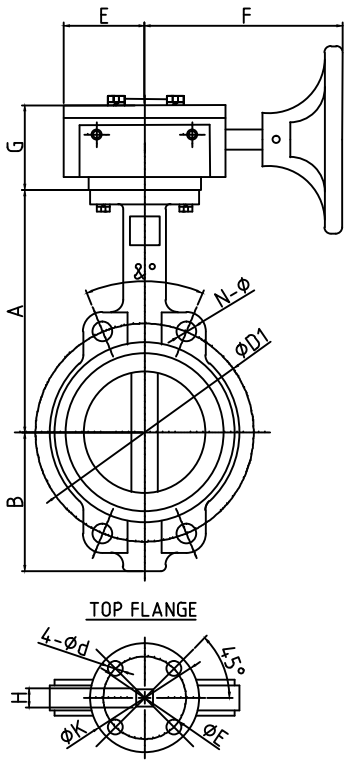


The list about dimension for Wafer type butterfly valve

Technical specification	
Design Standard	GB12238-89, AP1609
Face to Face	GB12221, AP1609 MSS-67-1995, ANSI B16.1
Flange Standard	ANSI 125/150 DIN2501 PN10/PN16
Connection Manner	Wafer Connection
Inspection and Test	GB13927, AP1598
Nominal Pressure	1.0Mpa, 1.6Mpa, 150Lb
Model of Driving	Hand, electrically-driven, air-operated and so on model of operation

Item	Parts Name	Material	Standard
1	Body	GG25	A126B
		GGG40	A536
2	Disc	GGG40	A536
		CF8	A351
3	Stem	CF8M	A351
		SS416	A276
		SS431	A276
		SS304	A276
4	Seat	EPDM	ASTM D20004
		NBR	BS379 B148014
		VITON	E034
		PIFE	ASTMB438
		C954	B148
6	O-Ring	EPDM	ASTM D20004
		NBR	D20004
		VITON	
7	Gear Box	Assembling	A536 (Gear)



Dimension of Body Construction

SIZE	A	B	C	D	d0	L	ISO5211	K	E	HXH	4-φd	G	E	F	A1	B1	φ	L.O	G.O	Weight(Kg)	
2"	DN50	161	80	42	43	52.9	12.6/14.3	30	F07	90	70	11	X11	4-10	75	52	153	52	45	150	
2.5"	DN65	175	89	44.7	46	64.5	12.6/14.3	30	F07	90	70	11	X11	4-10	75	52	153	52	45	150	
3"	DN80	181	95	45.2	46	78.8	12.6/14.3	30	F07	90	70	11	X11	4-10	75	52	153	52	45	150	
4"	DN100	200	114	52	52	104	15.77	30	F07	90	70	11	X11	4-10	75	52	153	52	45	150	
5"	DN125	213	127	54.4	56	123.3	18.92	30	F07	90	70	14	X14	4-10	75	52	153	52	45	150	
6"	DN150	226	139	55.8	56	155.1	18.92	30	F07	90	70	14	X14	4-10	75	52	153	52	45	150	
8"	DN200	260	175	60.6	60	202.5	22.10	40	F10	125	102	17	X17	4-12	86	75	250	75	63	300	
10"	DN250	292	203	65.6	68	250.5	28.45	40	F10	125	102	22	X22	4-12	86	75	250	75	63	300	
12"	DN300	337	242	76.9	78	301.6	31.60	40	F10	140	102	22	X22	4-12	83	81	227	81	80	300	
14"	DN350	368	267	76.5	78	333.3	31.60	45	F10	140	102	22	X22	4-12	83	81	227	81	80	300	
16"	DN400	400	309	86.5	102	389.6	33.15/37.95	52	F14	197	140	27	X27	4-18	126	115	278	121	179	300	
18"	DN450	422	328	102	114	440.5	37.95/42.86	52	F14	197	140	27	X27	4-18	146	144	306	142	198	300	
20"	DN500	480	361	127	127	491.6	41.12/45.72	65	F14	197	140	36	X36	4-18	146	144	306	142	198	300	

Dimension of Connection

SIZE	φD1	N-φ	φ	φD1	N-φ	φ	φD1	N-φ	φ	φD1	N-φ	φ
2"	DN50	125	4-18	90°	125	4-18	90°	120.6	4-19	90°		
2.5"	DN65	145	4-18	90°	145	4-18	90°	139.7	4-19	90°		
3"	DN80	160	4-18	45°	160	4-18	45°	152.4	4-19	90°		
4"	DN100	180	4-18	45°	180	4-18	45°	190.5	4-19	45°		
5"	DN125	210	4-18	45°	210	4-18	45°	215.9	4-22.4	45°		
6"	DN150	240	4-22	45°	240	4-22	45°	241.3	4-22.4	45°		
8"	DN200	295	4-22	45°	295	4-22	30°	298.4	4-22.4	45°		
10"	DN250	350	4-22	30°	355	4-26	30°	361.9	4-25.4	30°		
12"	DN300	400	4-22	30°	410	4-26	30°	431.8	4-25.4	30°		
14"	DN350	460	4-22	22.5°	470	4-26	22.5°	476.2	4-28.4	30°		
16"	DN400	515	4-26	22.5°	525	4-30	22.5°	539.7	4-28.4	22.5°		
18"	DN450	565	4-26	18°	585	4-30	18°	577.8	4-31.8	22.5°		
20"	DN500	620	4-26	18°	650	4-33	18°	635	4-31.8	18°		